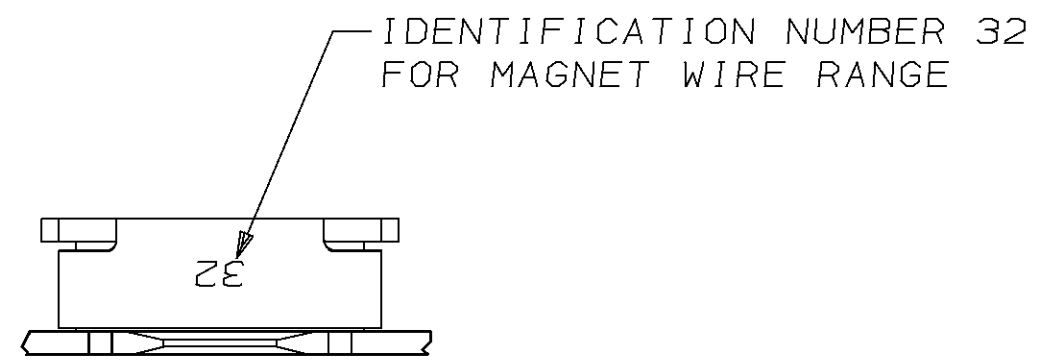
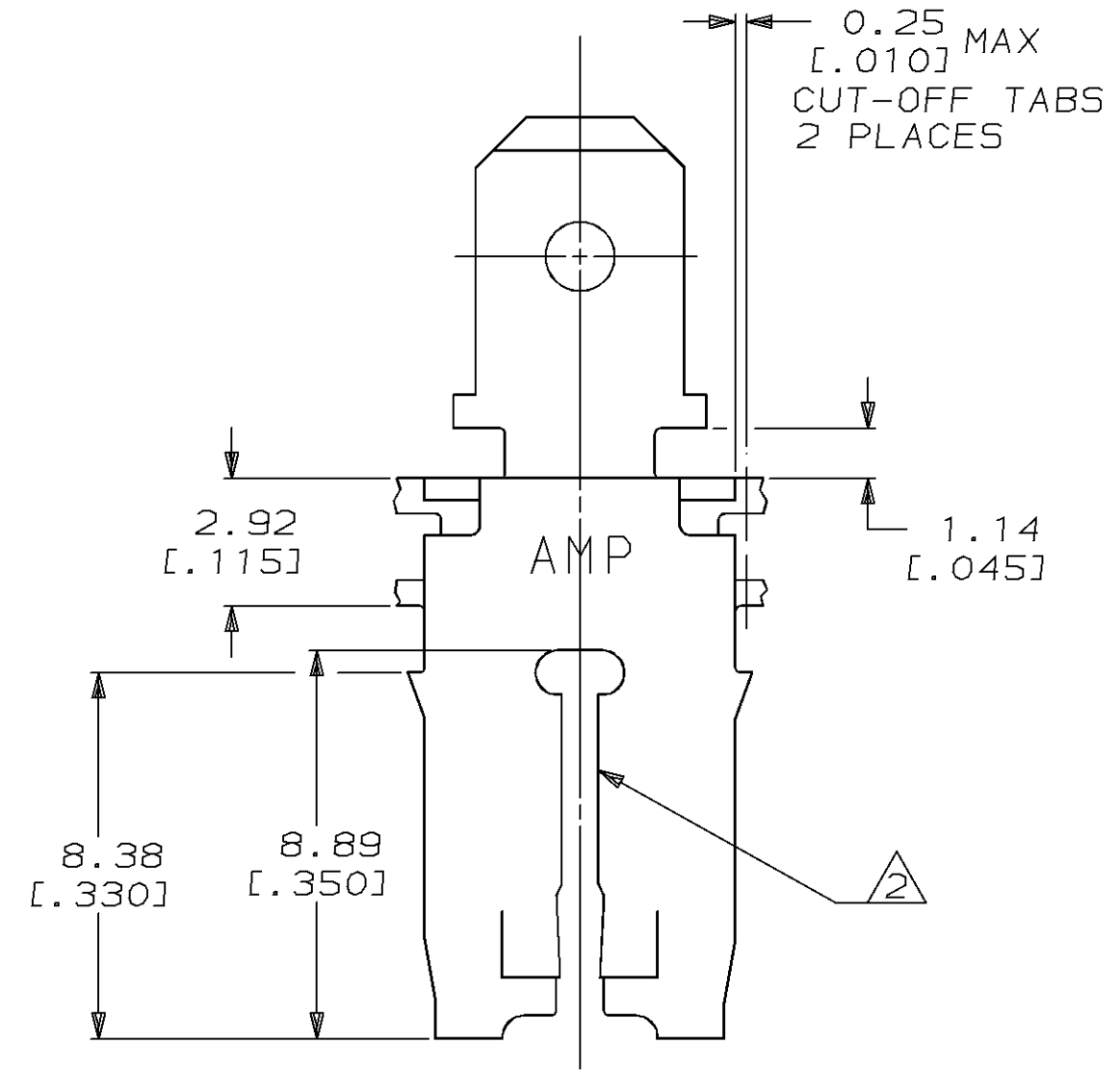
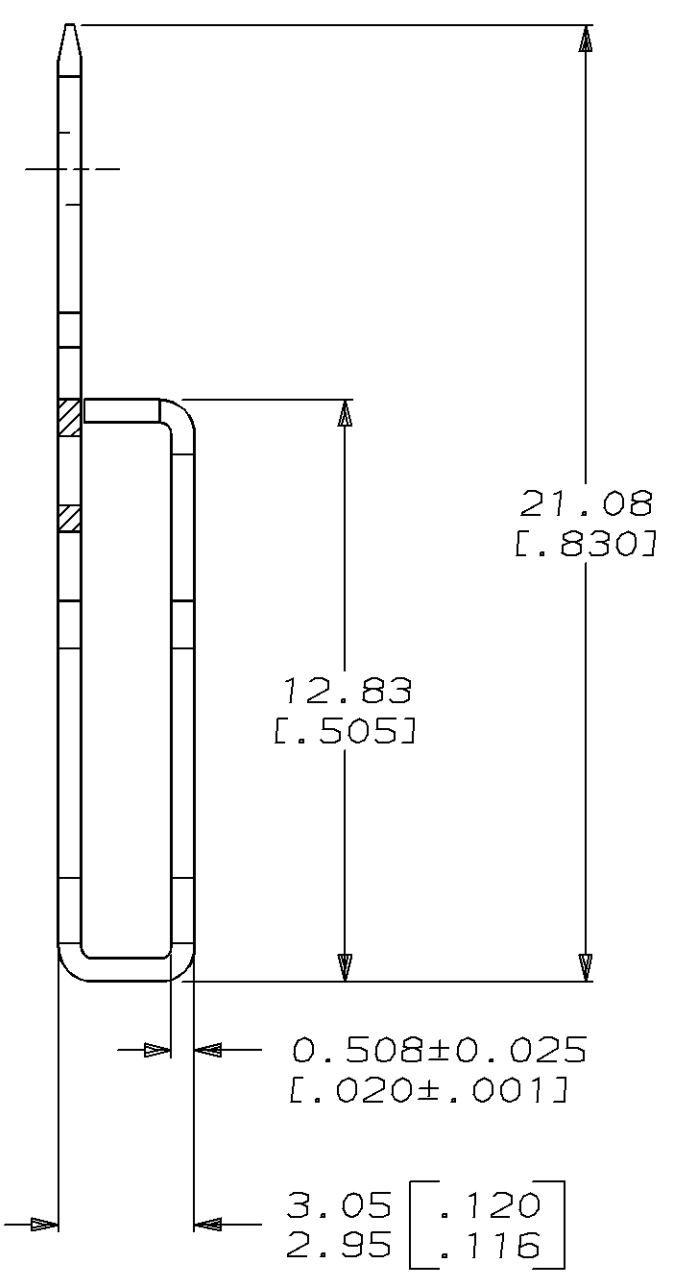
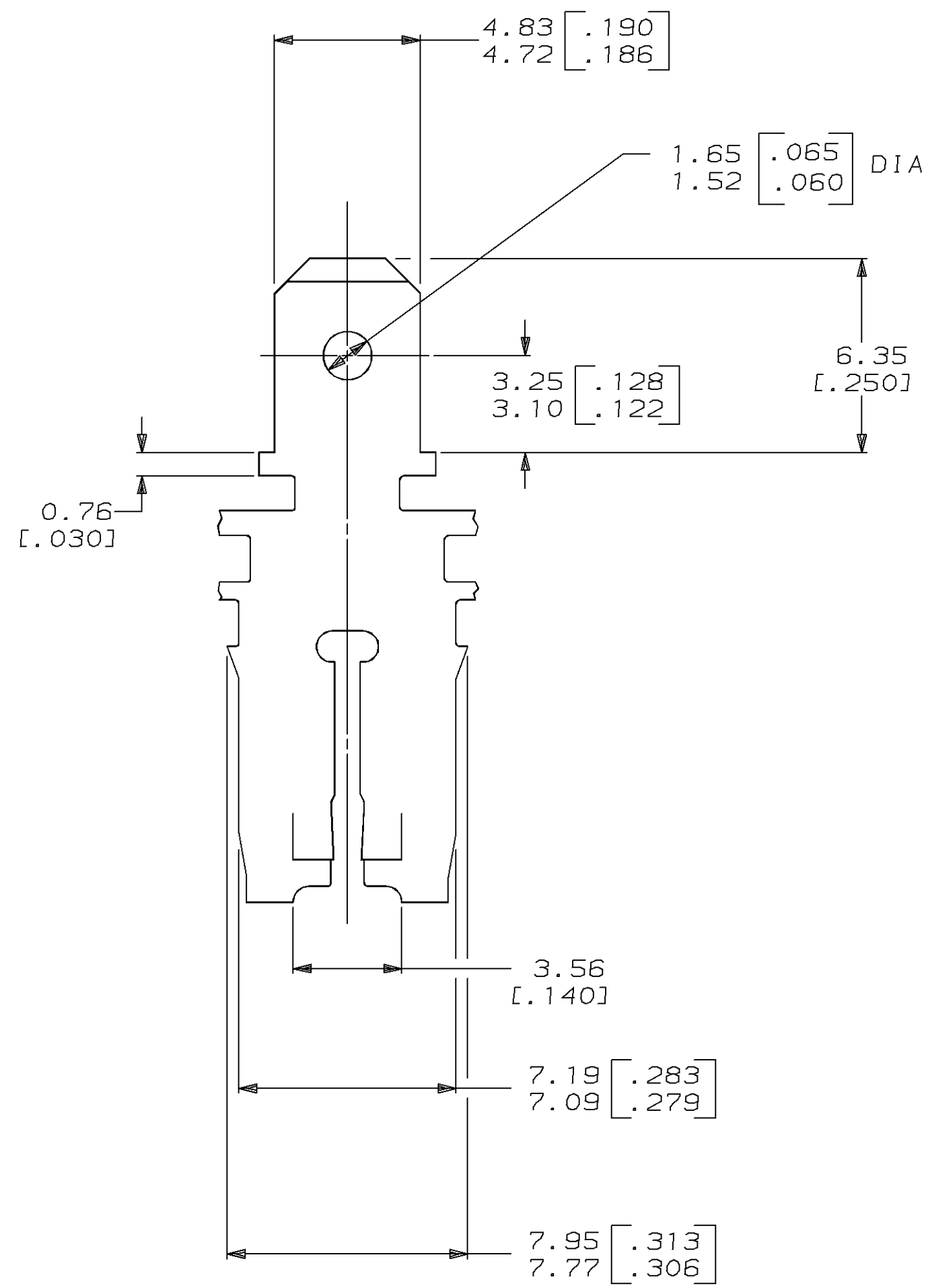


LOC	DIST	P	F	ZONE	LTR	DESCRIPTION	DATE	APPD
AF	50				B	REVISED STATUS 0710-0485-94	08/OCT/94	MF/NN



- 1 CONTINUOUS STRIP ON REELS WITH TERMINALS LOCATED ON 8.38±0.08 [.330±.003] CENTERS.
- 2 SLOT TERMINATES A SINGLE MAGNET WIRE ONLY. COPPER RANGE: 1.09-1.29mm [#17.5-#16] AWG.
- 3 AFTER INSERTION INTO PLASTIC HOLDER TAB PORTION MUST BE BENT OVER 45° TO 90° OR POTTED-IN TO PREVENT PULL-OUT WHEN MATING RECEPTACLE IS DISCONNECTED.
- 4 VARNISH RESIST OVER 0.002032 [.000080] MIN TIN PER MIL-T-10727.



DO NOT SCALE PRINT. UNLESS SPECIFIED DIMENSIONS IN mm [INCHES] TOLERANCES ON: 2 PLC DEC ± 0.25 [.010] 3 PLC DEC ± - ANGLES ± -		DR 8/20/92 MICHAEL S. FEHER	AMP Incorporated Harrisburg, PA 17105-3608		
MATERIAL H03 BRASS		CHK 8/21/92 JEFF R. RUTH			
FINISH		APPD 8/28/92 NELSON E. NEFF	NAME TAB, 4.75 [.187] FASTON™ MAG-MATE™		
THIS DRAWING IS A CONTROLLED DOCUMENT FOR AMP INCORPORATED. IT IS SUBJECT TO CHANGE AND THE CONTROLLING ENGINEERING ORGANIZATION SHOULD BE CONTACTED FOR THE LATEST REVISION.		APPD 8/28/92 TERRY L. SHUTTER			
4		PRODUCT SPEC 108-2012	SIZE C	CAGE CODE 00779	DRAWING NO G=63667
		APPLICATION SPEC 114-2066	SCALE 6:1	SHEET 1 OF 1	
		WEIGHT -	CUSTOMER DRAWING		